

ARCHITECT:
PIPER-WIND ARCHITECTS, INC.
 2121 CENTRAL STREET, SUITE 143
 KANSAS CITY, MISSOURI 64108
 TEL. (816) 474-3050
 FAX. (816) 474-3051

HISTORIC TRUMAN COURTHOUSE

INTERIOR RENOVATION

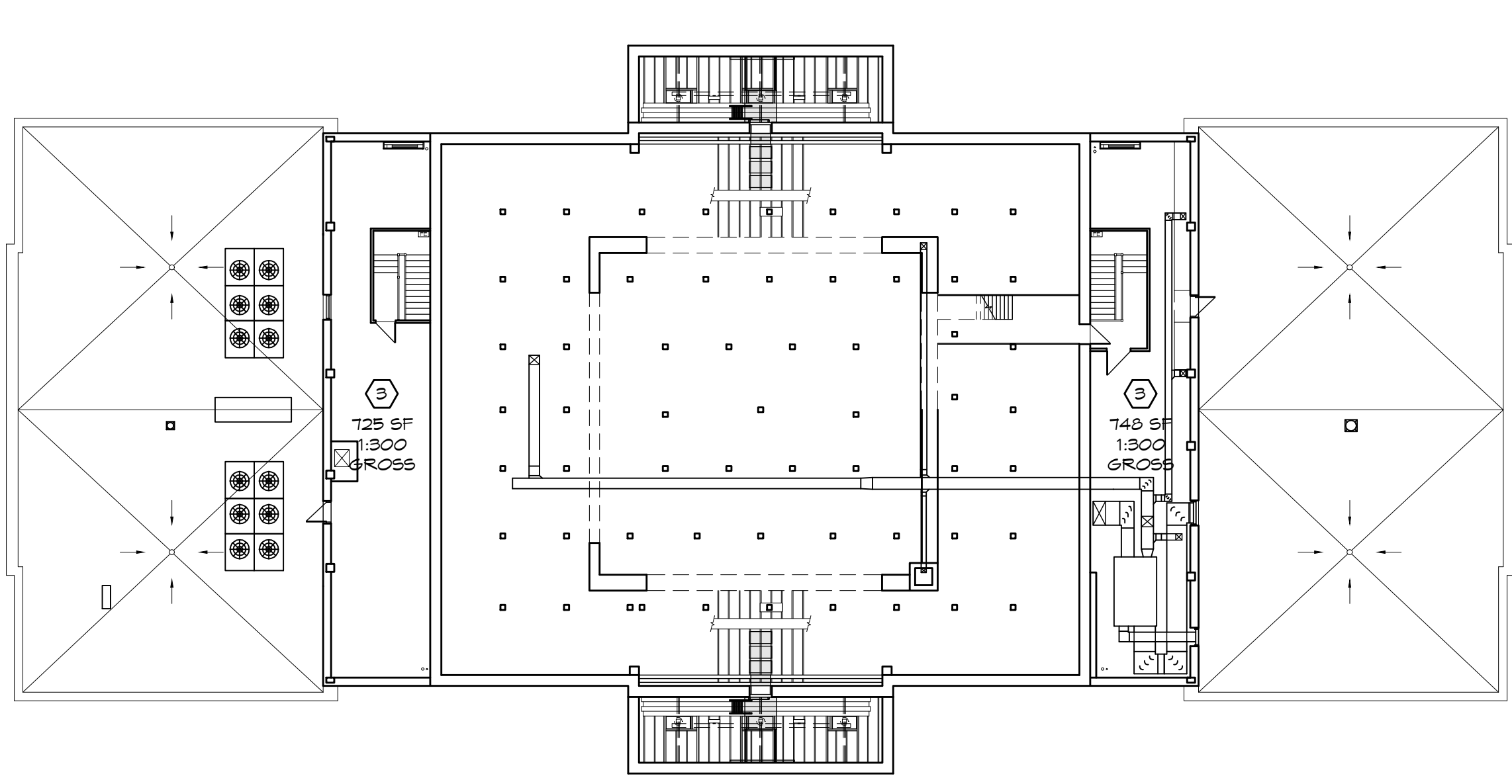
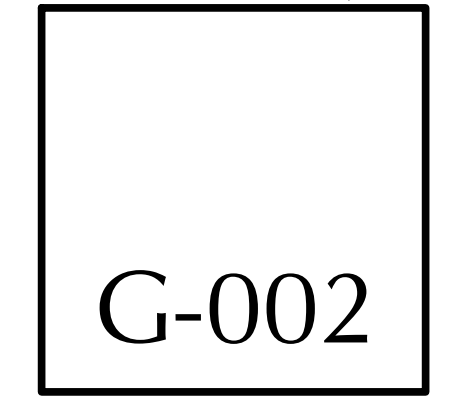
102 NORTH MAIN STREET, INDEPENDENCE, MISSOURI 64050

ISSUED FOR
 CONSTRUCTION

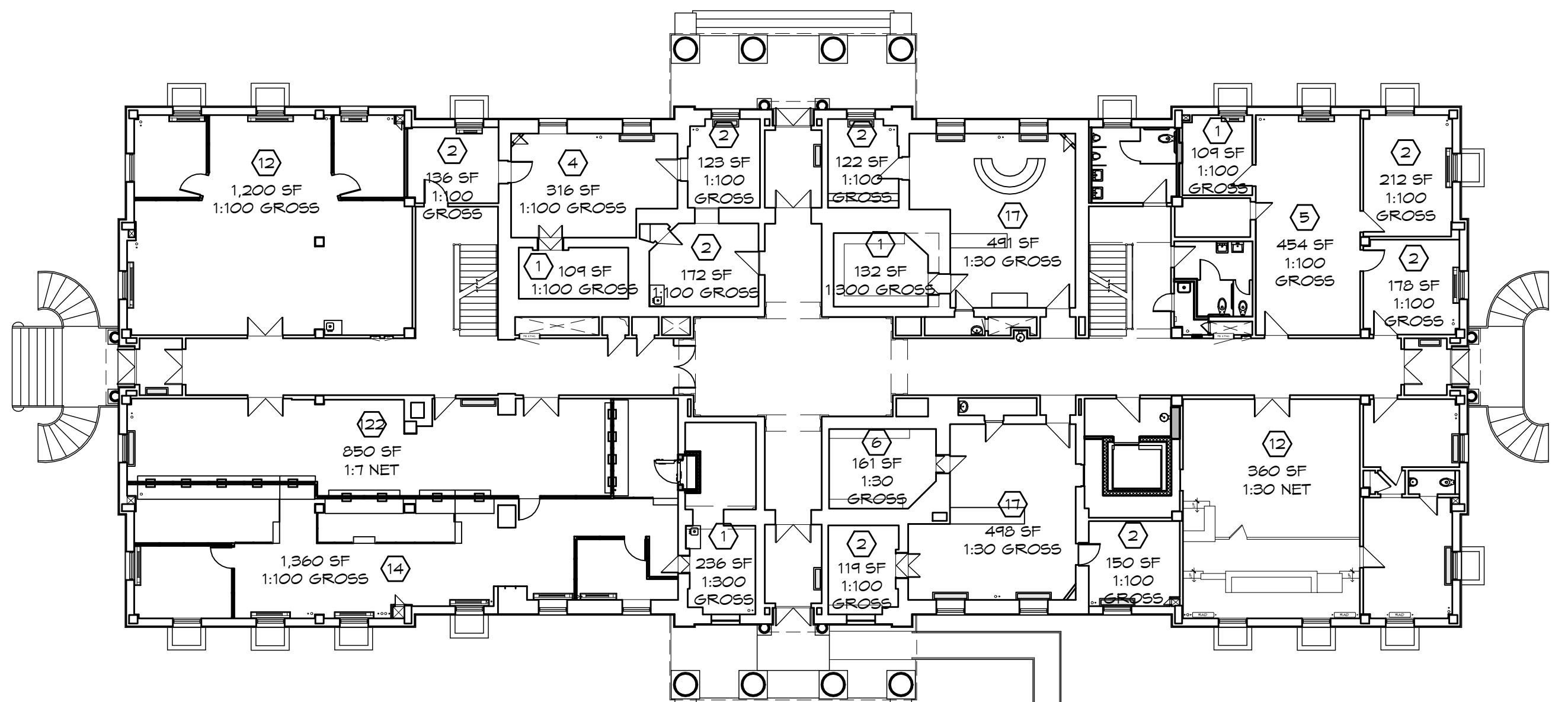
PROJECT NO.	3811
DATE	10-19-2012
DRAWN BY	CAMSAKMDR
CHECKED BY	EP
CHECKED BY	EP
REVISED DATE	DESCRIPTION

SHEET TITLE & NUMBER
CODE SUMMARY

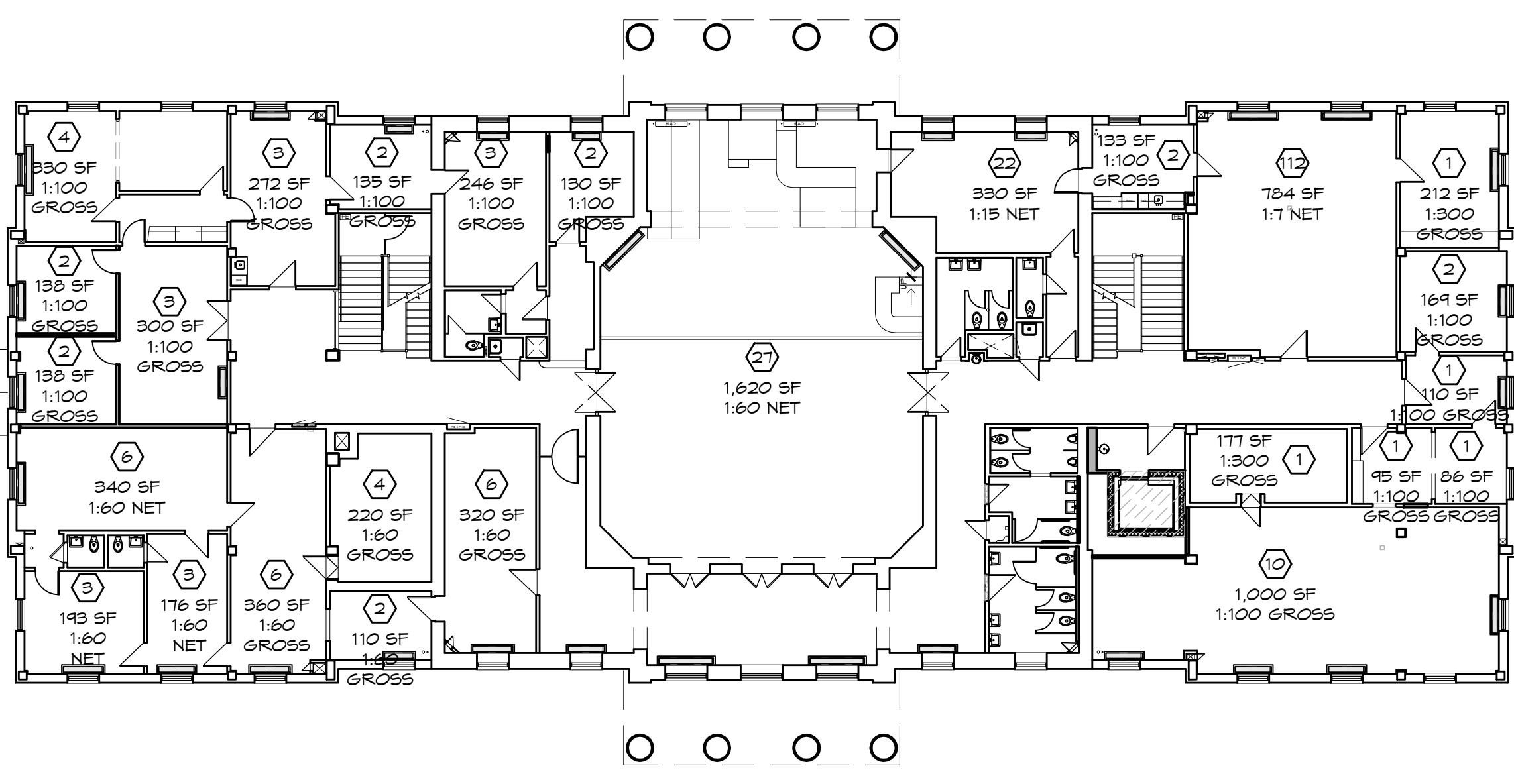
COPYRIGHT © 2012
 PIPER-WIND ARCHITECTS, INC.



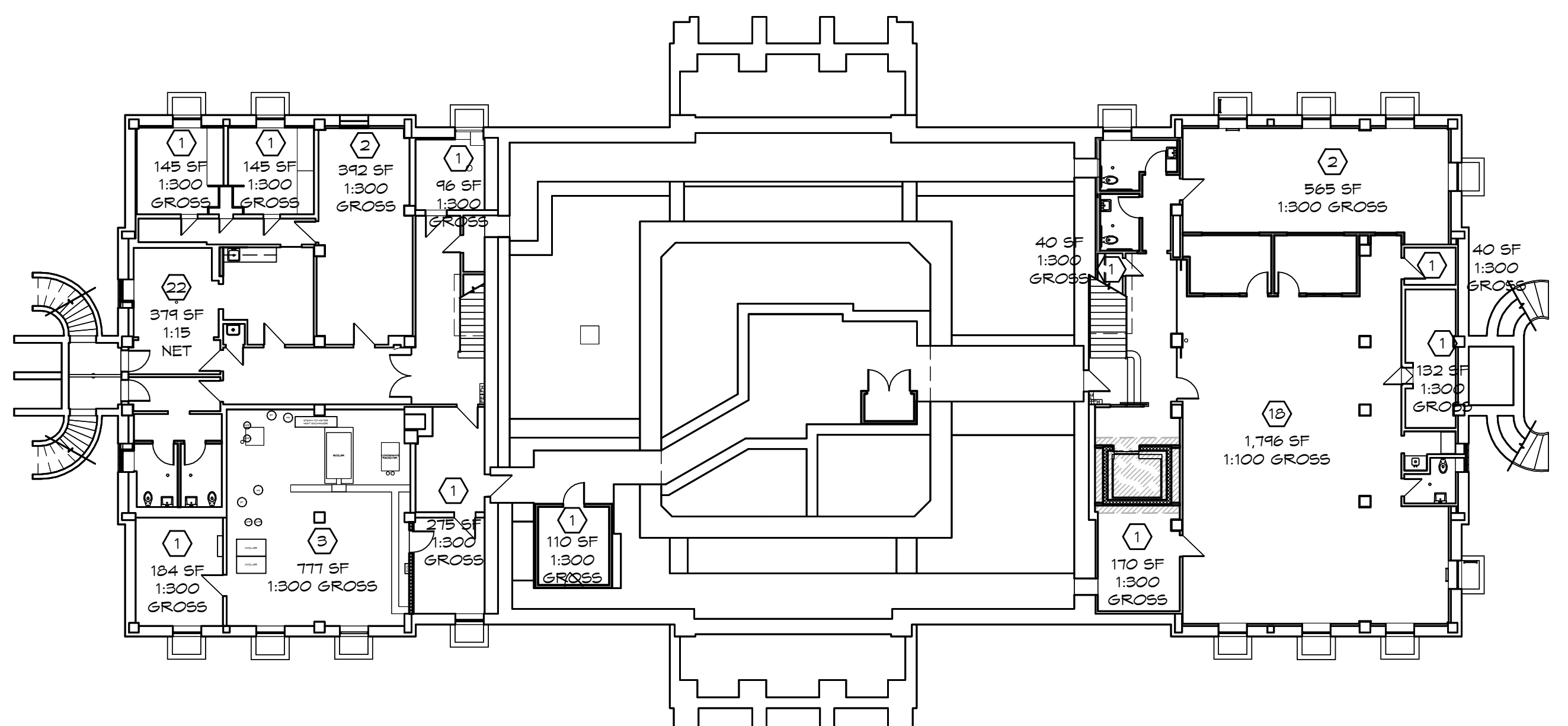
ATTIC



FIRST FLOOR

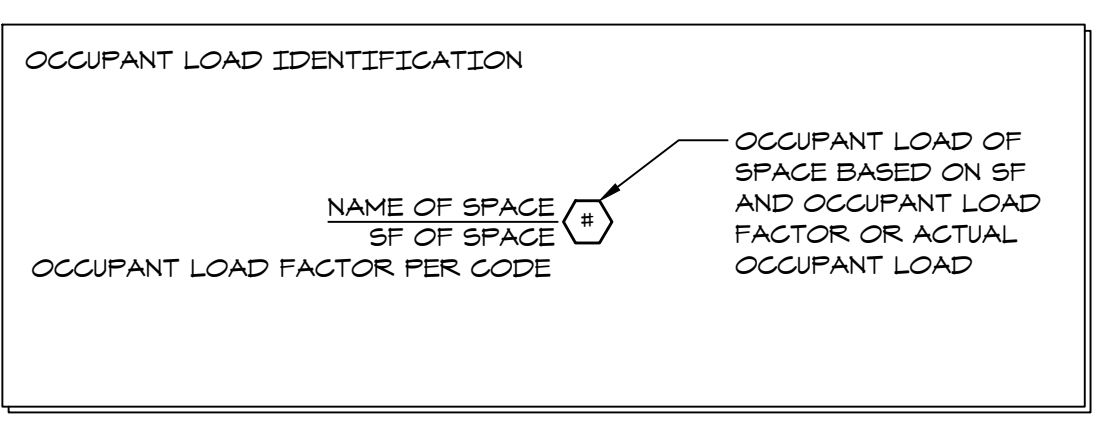


SECOND FLOOR



LOWER LEVEL

2 OCCUPANT LOAD DIAGRAMS



PLUMBING FIXTURE SUMMARY	REQUIRED	ACTUAL
MEN'S WATER CLOSETS	3	7
MEN'S URINALS	4	5
MEN'S LAVATORIES	7	7
WOMEN'S WATER CLOSETS	7	10
WOMEN'S LAVATORIES	5	10
UNISEX WATER CLOSETS	0	5
UNISEX LAVATORIES	0	5
DRINKING FOUNTAINS	3	3
UTILITY SINKS	1	3

OCCUPANT LOAD SUMMARY	
LOWER LEVEL	57
FIRST FLOOR	224
SECOND FLOOR	331
ATTIC	6
TOTAL	623

BUILDING SUMMARY	
ADDRESS:	102 NORTH MAIN STREET INDEPENDENCE, MISSOURI 64050
ZONING:	COMMERCIAL - IMPROVED
STORIES:	2 STORIES
BUILDING HEIGHT:	± 10' TOP OF ROOF - NO CHANGE ± 110' TOP OF CUPOLA - NO CHANGE
OCCUPANCY:	MIXED USE - NONSEPARATED
CONSTRUCTION TYPE:	VB NON CONFORMING
SFRINKLERED:	PARTIAL

APPLICABLE CODES
- 2009 INTERNATIONAL BUILDING CODE
- 2009 INTERNATIONAL EXISTING BUILDING CODE
- 2009 INTERNATIONAL MECHANICAL CODE
- 2009 UNIFORM PLUMBING CODE
- 2009 INTERNATIONAL FIRE CODE
- 2008 NATIONAL ELECTRICAL CODE
- 2009 INTERNATIONAL ENERGY CONSERVATION CODE
- 2010 ADA STANDARDS FOR ACCESSIBLE DESIGN

1 CODE SUMMARY

J:\Autocad\Projects\Jackson_City_Trmn_Ctr\Issue\COND\DOC\CORE_SHEET\C-002
 5/31/2012 11:37 AM
 Piper-Wind Architects, Inc.